

- NOTES
1. ALL RESISTORS ARE IN OHMS, 1/4W, 5% UNLESS OTHERWISE INDICATED.
  2. CAPACITANCE VALUES LESS THAN 1 ARE IN MICROFARADS. ABOVE 1 IN PICOFARADS UNLESS OTHERWISE INDICATED. ELECTROLYTICS UNLESS OTHERWISE INDICATED ARE IN MICROFARADS.
  3. CIRCLED NUMBERS INDICATE LOCATIONS OF CERTAIN WAVEFORM READINGS.
  4. DOTTED NECK BOARD GROUND PATH (CONNECTION TO P202-4 AND P-5) MAY NOT BE PRESENT ON SOME VERSIONS.
  5. ON SOME NECK BOARDS, R214 AND R216 ARE PRESENT AND IN SERIES TO YIELD AN EFFECTIVE RESISTANCE OF 22M, 1W. ON OTHER BOARDS THERE IS ONLY ONE RESISTOR (22M, 1W) WHICH MAY BE DENOTED AS R214 AND R216.

**CAUTION SAFETY CRITICAL COMPONENT.**

**X-RAY RADIATION RELATED COMPONENT.**

REPLACE ONLY WITH SAME TYPE PARTS AS SHOWN IN PARTS LIST.

- NOTES (CONT'D):
6. ALL RESISTORS REFERRED TO IN NOTE 5. ARE 10% CARBON COMPOSITION.

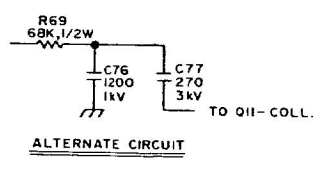
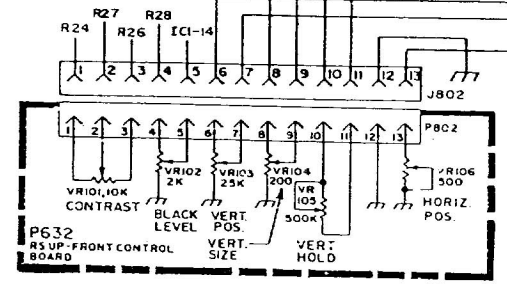
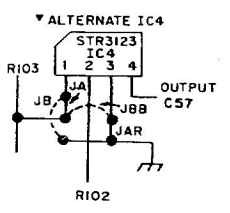
TABLE I

SEE NOTE 1

REL. NO.	MOD. NO.	RI07	R80	RI17	RI10	RI41	RI49
YB2A7193-000	25K7193	1.2K	3.1	680	OMIT	OMIT	OMIT
Y95A7191-000	25K7191	1.2K	3.9	680	180K	820	15K

NOTE:

WHEN USING ALTERNATE IC4, STR3123, REMOVE JUMPERS JR AND JBB. RE-INSTALL THEM IN JA AND JR RESPECTIVELY.



USED IN EARLIER MODELS. SEE ALTERNATE CIRCUIT (MOUNTED ON TERMINAL STRIP).